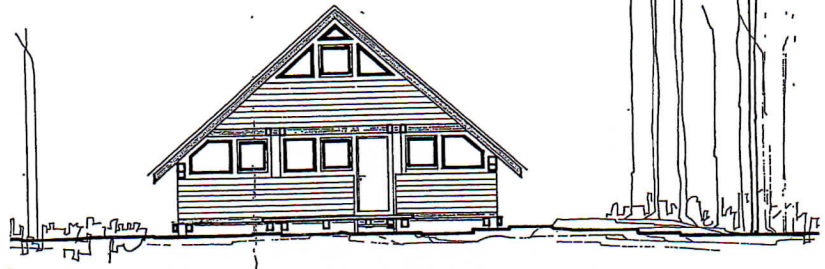
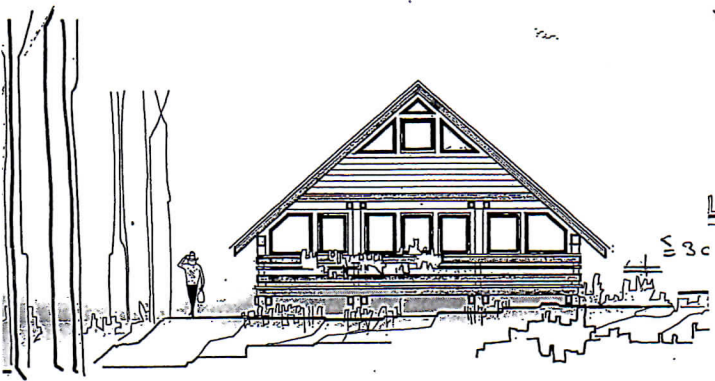


Typ Meran 55



SÜD GIEBEL.

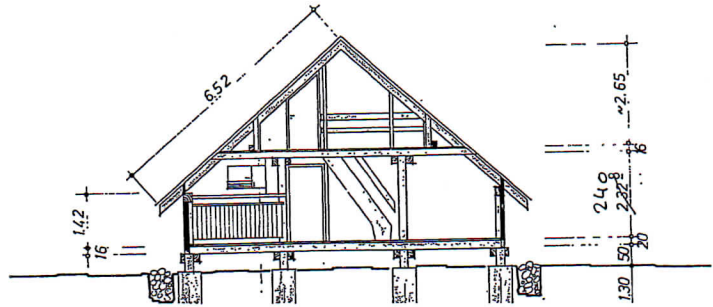
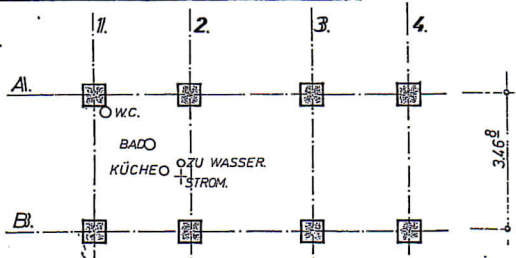
NORD GIEBEL.

Gepüft

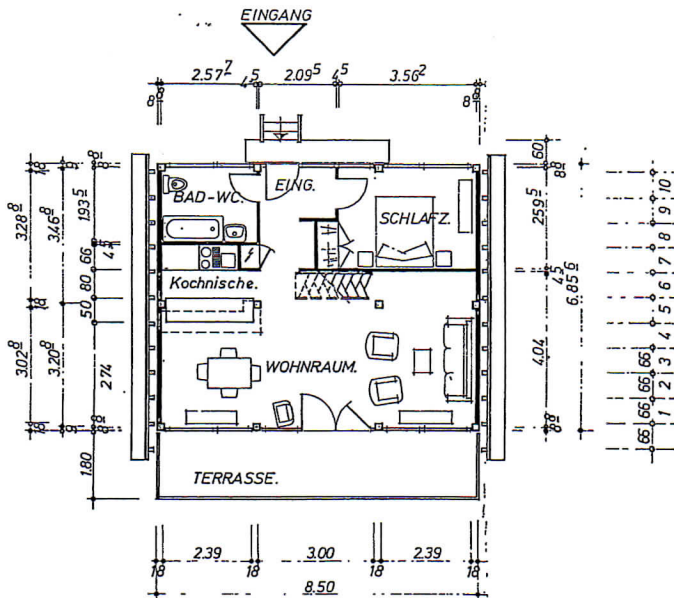
Traunstein, den 28. 8. 1973

i.A. *A. R. Wimmer*
Kreisbaumeister

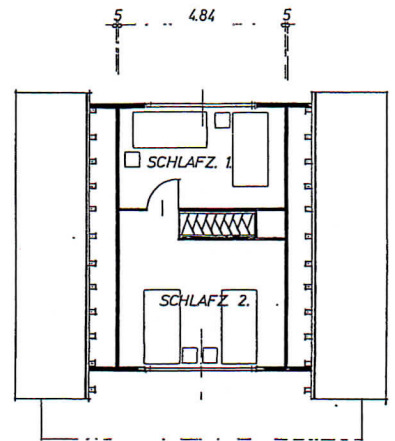
nur Teilbaugenehmigung



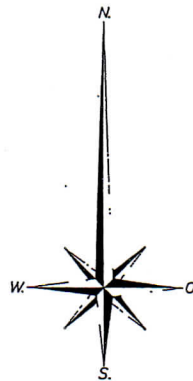
SEITENANSICHT.



ERDGESCHOSS.



OBERGESCHOSS.



Gepüft

den 26. 11. 1973

A. R. Wimmer
Kreisbaumeister